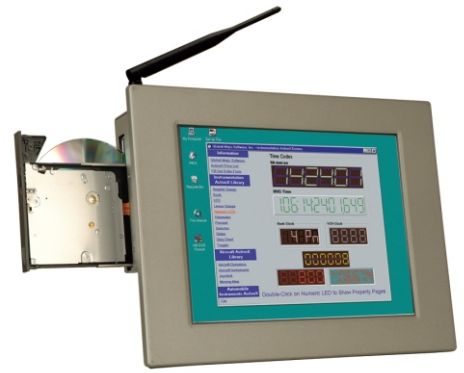


PPE-C12AN 12.1" TFT LCD 無風扇鐵殼觸控式工業電腦 AMENS

12.1" Fanless Panel PC with Intel Atom Processor

Features

- 12.1" 500nits high brightness TFT LCD with LED Backlight.
- Dual Gigabit Ethernet provides continuous network service and allows sharing among different workgroups in two different subnets.
- Optional 802.11 b/g wireless kit.
- One slim type CD-ROM drive bay.
- One internal 2.5" SATA HDD and CF slot.
- Robust aluminum front bezel and metal casing.
- IP65 compliant front panel.



Specifications

LCD	LCD Size : 12.1" ; Resolution : 1024 x 768 (XGA) Brightness : 500 cd/m ² ; Contrast Ratio : 700:1 Viewing Angle (H-V) : 160 ° / 160 ° Backlight MTBF : 50000 (LED Backlight)
CPU Board	NANO-945GSE-N270
Memory	1 x 200-pin SO-DIMM socket, supporting DDR2 533MHz modules for up to 2GB
CPU	Intel Atom process N270 1.6GHz CPU
Chipset	Intel 945GSE + ICH7M
SSD	CF Type II
Drive Bay	1 x 2.5" SATA HDD Bay with Anti-Shock ; 1 x Slim Type CD-ROM Bay
I/O	2 x RS-232 1 x RS-232 (Alternative to RS-422/485) 2 x RJ-45 for LAN Port 2 x USB 2.0 1 x VGA Port Line-in, Line-out, MIC-in 1 x PS/2 mouse and keyboard interface 1 x 12VDC input Power Jack 1 x Power Switch
Touch Screen	5-wire resistive type with RS-232 interface
Expansion Slot	1 x PCIe mini card
Power Supply	60W Power Adapter ; Input: 90VAC~264VAC, 50/60Hz ; Output: 12VDC
Operating Temp	-10 ~ 50
Storage Temp	-20 ~ 60
Vibration	5~17Hz, 0.1" double amplitude displacement 17~640Hz, 1.5G acceleration peak to peak
Shock	10G acceleration part to part (11ms)
Relative Humidity	5% ~ 95% @ 60 , non-condensing
Net / Gross Weight	6 kg / 8 kg
Dimension	340 x 276.7 x 73.4 mm
Front Panel Protection	IP65 Compliant

Ordering Information

Part No.	Description
PPE-C12AN	12.1" 500 cd/m ² XGA fanless panel PC, Intel Atom N270 1.6GHz/ 512KB, 1GB DDR2, Res T/S, Silver Color, R21, RoHS

Dimensions (Unit: mm)

