

Features

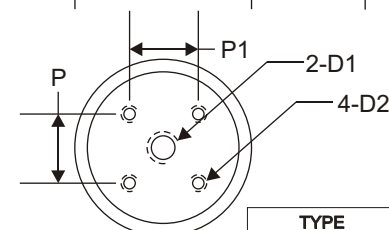
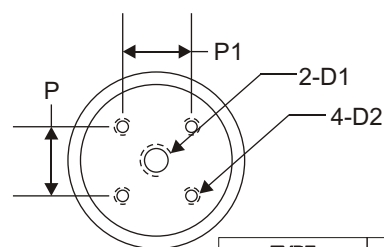
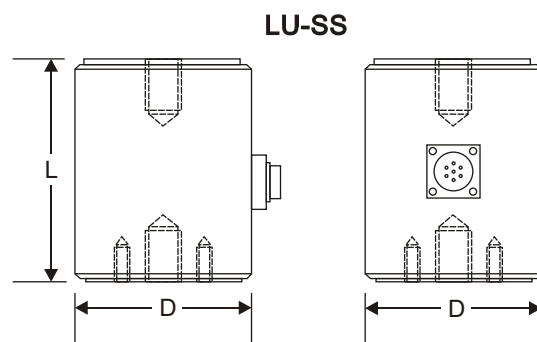
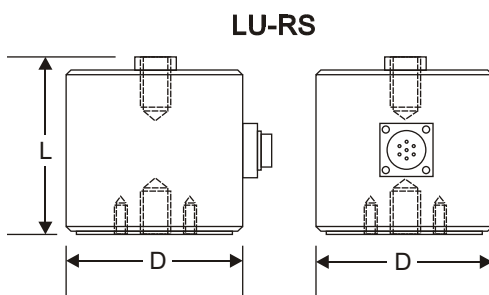
- High accuracy.
- Capacities : 2Kg,5Kg,20Kg,50Kg,100Kg, 200Kg,500Kg,1000Kg,2000Kg.
- Easy cable replacement.
- Integral overload protection up to a nominal load of 2000Kg.
- Parallel connection of several load cells is possible.



Specifications

Type	LU-RS-2K	LU-RS-5K	LU-RS-10K	LU-RS-20K	LU-RS-50K	LU-RS-100K	LU-RS-200K	LU-SS-500K	LU-SS-1000K	LU-SS-2000K
Maximum capacity	2Kg	5Kg	10Kg	20Kg	50Kg	100Kg	200Kg	500Kg	1000Kg	2000Kg
Material	Alloy steel									
Recommended excitation	10V									
Maximum Excitation	15V									
Rated output (=RO)	1 ± 0.01mV/V							2 ± 0.01mV/V		
Zero balance	± 0.05%RO									
Creep error (20 minutes)	± 0.05%RO									
Repeatability	± 0.05%RO									
Input resistance	390 ± 3									
Output resistance	350 ± 3									
Compensated temperature range	-10 ~ 40									
Operating temperature range	-10 ~ 50							-20 ~ 60		
Temperature effect on output	0.026% Load /10									
Temperature effect on zero	0.026% RO /10									
Safe load limit	150% of rat. cap.							120% of rat. cap.		
Ultimate load	200% of rat. cap.							150% of rat. cap.		
Protection class	IP 65									

Dimensions (Unit:mm)



TYPE	L	D	D1	D2	P	P1
LU-RS-2/5K	45	53	M6	M4	27	27
LU-RS-10/20/50K	61	65	M10	M6	32	32
LU-RS-100/200K	65	72	M10	M8	35	35

TYPE	L	D	D1	D2	P	P1
LU-SS-500K	86	72	M12	M6	40	40
LU-SS-1000K	112	90	M18	M6	65	65
LU-SS-2000K	128	100	M18	M8	65	65