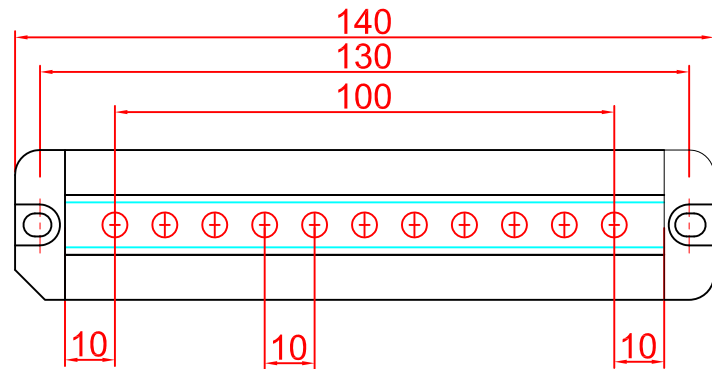


# INSTALLATION

## Slim Type Light Curtain PFB1 Series

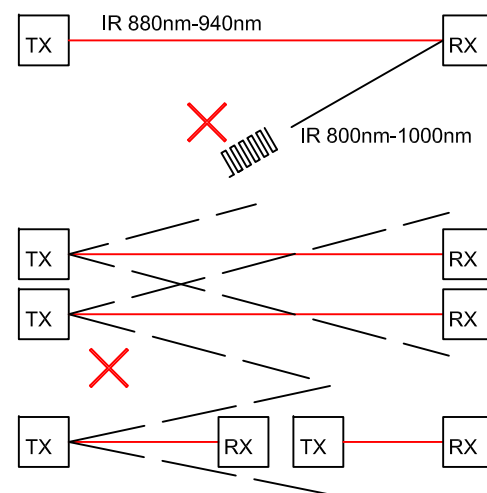
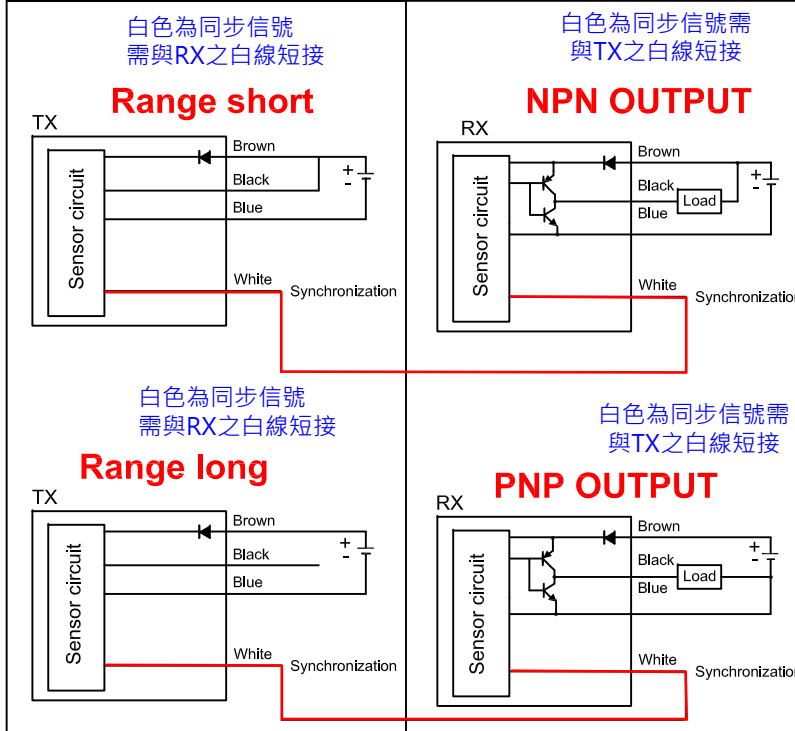
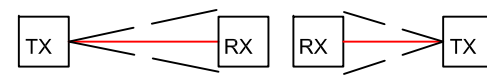
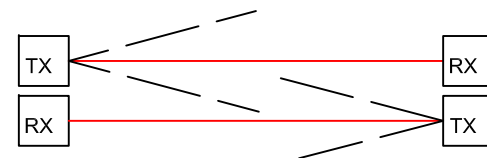
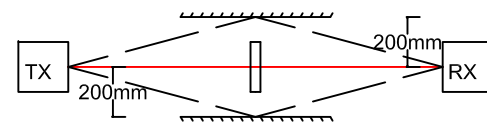
**Warning :** Never use this product in any personnel safety application .



### SPECIFICATION

Power supply requirement	22-28VDC Ripple<10% Diode Protected
Outputs (NPN or PNP)	24V 20mA ; 0V 40mA
Current consumption	TX 40mA RX 40mA
Number of beams	11~77
Object detection	14mm
Protection zone	100mm ~ 760mm
Range	short 0.5m-1.5m long 1m-3m
Response time	20ms
Operating temperature	0°C to +50°C
Status indicators TX	Red=Blocked Green=Clear
Status indicators RX	Red=Blocked Green=Clear
Enclosure protection	IP65
Light curtain connection	M8 4core or 3M cable connected to both TX&RX units
Classification	CE mark for LVD
Warranty	1 year

### !ATTENTION!



Multiple guard applications, it is recommended to use the Beam coding (FREQ-A or FREQ-B), reduce mutual interference between light curtains.

### Status indicators

#### Clear

Yellow

Red

Green

TX

TX Green ON , Red OFF  
RX Green ON , Red OFF

#### Blocked

Yellow

Red

Green

TX

TX Red ON , Green OFF  
RX Red ON , Green OFF

#### Range long

Yellow

TX

TX Yellow OFF

#### Range short

Yellow

TX

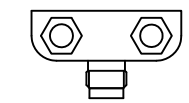
TX Yellow ON



Use M4 screws and M4 nuts. The tightening torque should be 0.5N m or less.  
During mounting , do not apply any bending or twisting force to the sensor.(Please arrange the screws and nuts separately.)

### CABLE CONNECTION

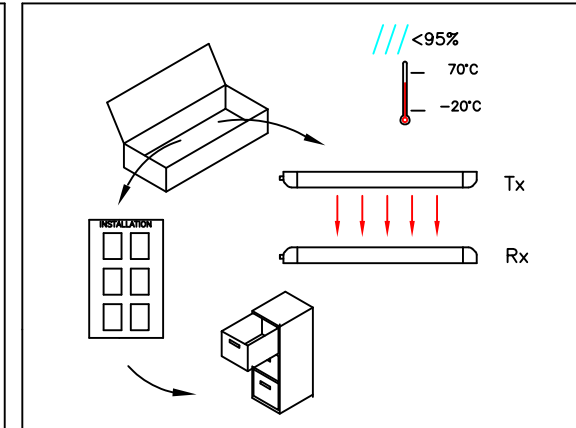
#### T TYPE



Both sides of the fixed

### Model List

Model Number	Number of Beams	Protection Zone (mm)	Lnstall Length (mm)	Assembly Length (mm)
PFB1-10-11T	11	100	130	140
PFB1-10-22T	22	210	240	250
PFB1-10-33T	33	320	350	360
PFB1-10-44T	44	430	460	470
PFB1-10-55T	55	540	570	580
PFB1-10-66T	66	650	680	690
PFB1-10-77T	77	760	790	800



### CAUTIONS

**Warning :** Never use this product in any personnel safety application .

- Make sure that the power supply is off while wiring.
- Take care that wrong wiring may damage the sensor.
- Verify that the supply voltage variation is within the rating.
- If power is supplied from a commercial switching regulator, ensure that the frame ground (F.G.)terminal of the power supply is connected to an actual ground.
- In case noise generating equipment (switching regulator , inverter motor, etc.) is used in the vicinity of this product, connect the frame ground (F.G.)terminal of the equipment to an actual ground.
- Do not run the wires together with high-voltage lines or power lines or put them in the same raceway. This can cause malfunction due to induction.
- Do not use during the initial transient time (500ms) after the power supply is switched on.
- Avoid dust, dirt, and steam.
- Take care that the sensor does not come in direct contact with water, oil, grease, or organic solvents, such as, thinner, etc.
- Do not use in an environment containing inflammable or explosive gas.
- Make sure to use an isolation transformer for the DC power supply. If an auto-transformer (single winding transformer) is used, this product or the power supply may get damaged.
- In case a surge is generated in the used power supply, connect a surge absorber to the supply and absorb the surge.
- Take care that the sensor is not directly exposed to fluorescent light from a rapid -starter lamp or a high frequency lighting device, as it may affect the sensing performance.
- The emitter and the receiver must face each other with their cable ends on the same side. If they are set upside down, the sensor will not work correctly.
- This sensor is suitable for indoor use only.